

## **KömaCel** - integral foam sheet - with the very best values - both inner and outer

**Processing information for:** window manufacturers . plumbers . manufacturers of roller shutters . conservatory builders . machine builders . furniture makers . interior decorators . sign manufacturers . POS fitters . design and advertising agencies . printing industry . signage makers . vehicle and ship building, prefabricated buildings



## KÖMACEL – THE INTEGRAL FOAM SHEET FOR UNIVERSAL APPLICATION!

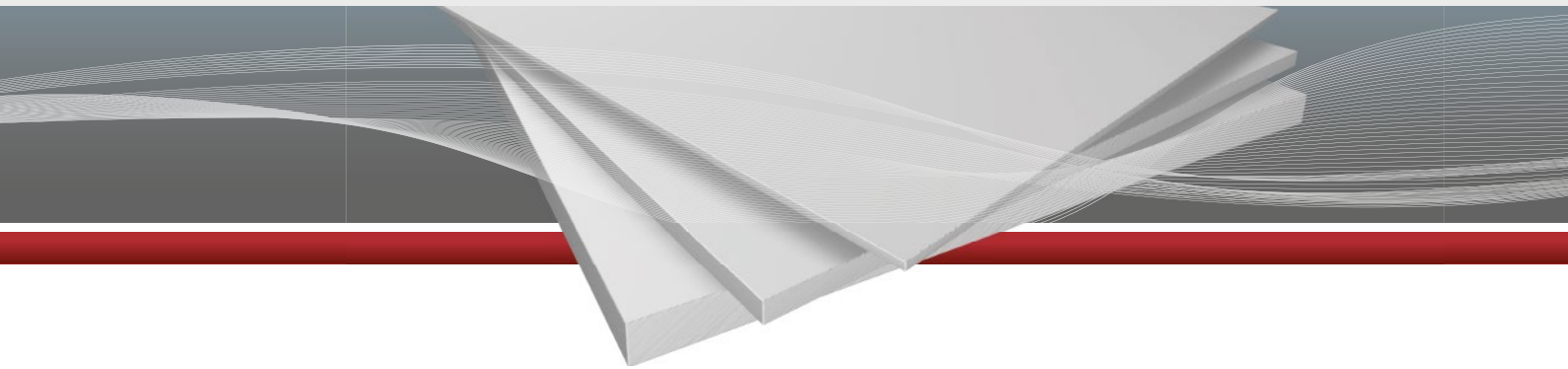
KömaCel is the world's No. 1 plastic sheet using the Celuka extrusion process. 30 years' experience in using this process and PVC materials have resulted in an integral skin foam sheet that has been perfectly adapted to meet market requirements. This product's unique properties are down to the combination of a tough, solid outer skin and a cellular core, manufactured in a single process and from the same material.

The solid smooth outer skin gives the sheet a silk-gloss finish. This means KömaCel sheets are ideally suitable for screen printing and also for film-laminating. However, the advantages of this material are well known in all branches of industry and the building trade. The sheets boast low thermal conductivity, affording good levels of thermal and acoustic insulation. Good flexural strength and excellent processing

properties make these sheets the perfect material for a wide range of indoor and outdoor applications.

Characteristics:

- fine-celled foam structure
- solid, closed, smooth outer skin
- surface with silk-gloss finish
- homogeneously dyed throughout



## AREAS OF APPLICATION

### ADVERTISING

KömaCel is excellent for use in advertising to make **signs, banners, hoardings, display boards** and **dimensional lettering**, as well as for designing **trade fair stands** and **shop-window decorations**.

### BUILDING

KömaCel is an excellent choice for building **exhibition stands**. It is equally well suited for **wet and humid areas, shop fitting and interior conversion work, door and window elements, fascias, roller shutter boxes, non-transparent balustrade panels** and in **ship-building, prefabricated buildings** and **remodelling cars**.

### INDUSTRY

In the industrial sector, KömaCel is an excellent choice for producing **moulded parts, remodelling cars, chemical and laboratory areas** and in the **furniture industry**.



## CHARACTERISTICS

-  very good results in bonding
-  good acoustic insulation
-  low thermal conductivity
-  excellent print qualities
-  good acoustic insulation value
-  flame-retardant (up to 10 mm thickness)
-  good results from lamination
-  good flexural strength
-  resistant to weathering and lightfast
-  good results in painting
-  resistant to chemicals and corrosion
-  low water absorption
-  simple to process
-  100% recyclable



## SPECIAL QUALITIES

### Cutting operations

cutting, sawing, turning, filing, drilling, planing, milling, sanding, screwing

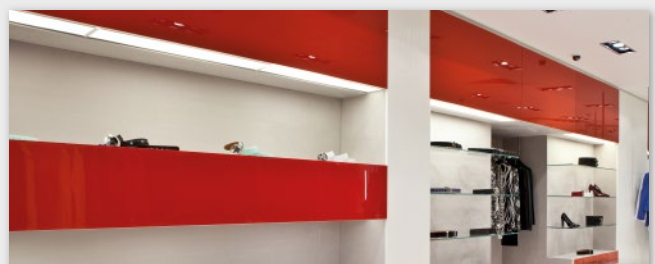
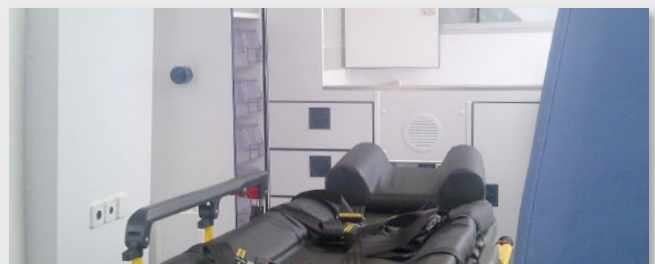
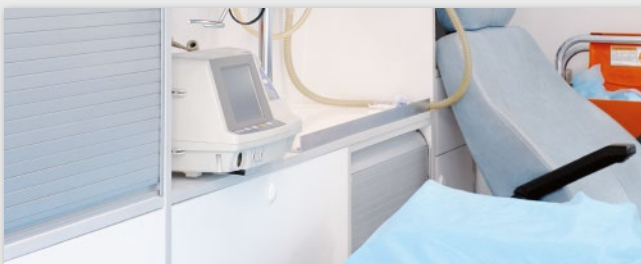
### Chipless fabrication

bending, edging and thermoforming

### Printing, painting and film coating

All known methods of lamination and painting are possible.

## EXAMPLES OF APPLICATION





**RANGE OF PRODUCTS**

Dimensions (mm)	White 652 similar to RAL 9010 in the thicknesses (mm)	White 654 similar to RAL 9016 in the thicknesses (mm)	Black 992 similar to RAL 9011 in the thicknesses (mm)	Piece/Sales pack	Piece/Pallet	Laminated with protective film*
2,440 x 1,220		4		5	125	
3,050 x 1,220		4		5	125	
2,440 x 1,220		5		4	100	
3,050 x 1,220		5		4	100	
2,440 x 1,220		6		3	75	
3,050 x 1,220		6		3	75	
3,000 x 1,250	8			3	60	
2,000 x 1,000	10	10		5	60	652, with film coating on one side
2,500 x 1,000	10	10		5	60	
3,000 x 1,000	10	10		3	60	
4,000 x 1,000	10				40	
3,000 x 1,250	10	10		2	50	652, laminated with protective film on one side
4,000 x 1,250	10				30	652, laminated with protective film on one side
3,000 x 1,560	10			2	40	652, laminated with protective film on one side
4,000 x 1,560	10				30	652, laminated with protective film on one side
3,000 x 1,250	13	13		2	40	652, laminated with protective film on one side
3,000 x 1,250		15		2	34	
3,000 x 1,250		17			30	with film on both sides
3,000 x 800		19		2	30	
3,000 x 1,250		19	19	1	30	on request
4,000 x 1,250		19			20	with film on both sides
3000 x 1560		19		1	20	
4000 x 1560		19				with film on both sides
3000 x 1250		24		1	20	with film on both sides
3000 x 1250		30		1	15	

Custom lengths and other formats with protective lamination upon request. Each thickness is packed in small cardboard packs.

\*Sheets laminated with protective film are only available as whole pallets.





## FOR THE ENVIRONMENT'S SAKE

KömaCel does not contain any toxic or moderately toxic, hazardous substances, which may be emitted in the long term. Our sheets have always been free from formaldehyde, asbestos, Lindane, PCBs, PCP or CFCs. Nor do they contain cadmium or lead. They do not contain monomers, biocides or plasticisers.

This is why KÖMMERLING's PVC-U sheets pose no risk to either people or the environment, either during production and use or when disposed of. Used sheets or remnants can be recycled. They are ground up in shredders and granulators and then returned into the production process to make new sheets. This creates a completely closed materials loop, which makes sense not only from the business aspect but also from an ecological one.

Instructions for storage: always store KömaCel sheets in a dry state on a flat surface, in air-conditioned rooms at approx. 15–20 °C. The packaged sheets must not be exposed to weathering and direct sunlight.



## CERTIFIED ACCORDING TO DIN ISO 9001

Systematic research and development work and many years of experience in working with plastics are the underlying basis for the widely recognised, high quality of our products. Tests are conducted at every stage – regular inspections by independent test institutes, from when raw materials are delivered through to final inspection of the finished products, attest to high degree of care taken during production. Our quality management system is certified according to DIN ISO 9001.

# KÖMACEL®

## VISIT OUR WEBSITE



Wide variety of products to meet every requirement: [www.komasheets.com](http://www.komasheets.com)



Recommended courtesy of:

**profine GmbH** - KÖMMERLING KUNSTSTOFFE/Business Unit Halbzeuge - Postfach 21 65 - 66929 Pirmasens, Germany  
Telephone +49 6331 56-0 - Fax +49 6331 56-2155 - [info@komasheets.com](mailto:info@komasheets.com) - [www.komasheets.com](http://www.komasheets.com)